

We've unlocked
new potential
in good old
fashioned wood.

Laminata

**Family
Homes**

Creating warm, healthy family homes



The Laminata team believes every family is entitled to a truly affordable home, so we're excited to introduce our collection of high performance, durable timber houses that provide real health and well-being benefits.

Solid timber trusses, posts and our unique small format Cross Laminata Timber (CLT) panels are manufactured at our Kerikeri mill from sustainable pine logs. These prefabricated components are designed to be lightweight for easy on-site assembly with just screws and bolts. No need for expensive logistics.

Our CLT panels and timber components come coated in an environmentally sound Scandinavian 'blonde' finish. So the house interiors are prefinished at the time of assembly and you won't need the added cost of plaster board, stopping or painting.

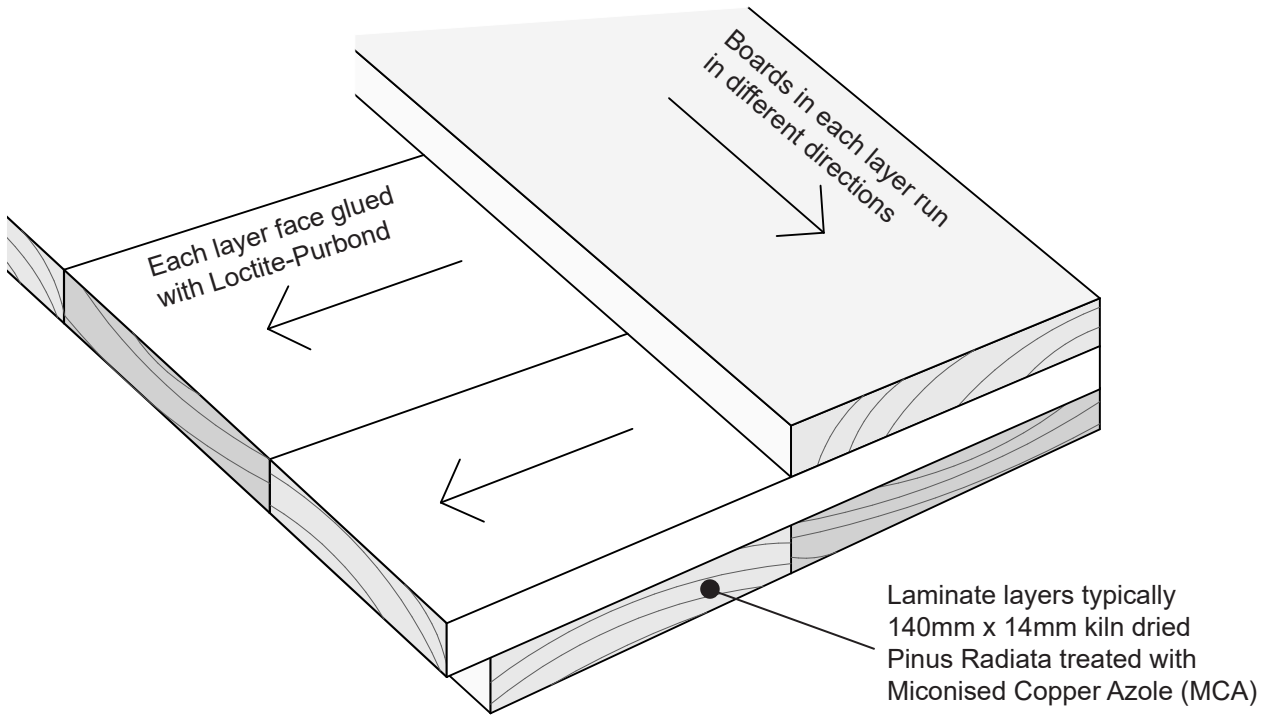
From log to Laminata CLT

Our Kerikeri processing plant mills local pine with maximum efficiency. Sawdust and wood shavings fire the kiln that dries the timber we use for our small format CLT panels. Because each layer is comprised of a number of small dimension pine boards, we can use lower grade timber and save cost to the consumer. The final product is made to measure and delivered direct to your building site, cutting down on your construction waste and associated costs.



Cross Laminated Timber

Why is Laminata paneling so strong? It comes down to its Cross Laminated Timber (CLT) construction. Standard timber boards can split along the grain but not across it. Laminata panels are made up of an odd number of perpendicular layers sandwiched together. The result is orthotropic, meaning it's strong and dimensionally stable no matter which way you look at it.



Benefits of Laminata CLT

- Structural strength and high resistance to deflection
- Small format: no expensive logistics and moving machinery
- Prefabricated for less waste and fast assembly
- Affordability: Low grade wood transformed into a high grade product



Living with wood

Wood is one of the oldest building materials used by humanity and with recent technological developments it is one of the most modern.

Our wood comes from locally grown trees and is a natural, renewable resource, with no two pieces being identical.

Responsibly sourced, certified timber is the only major building material that helps tackle climate change. Around 50% of the dry weight of wood is carbon, which remains locked in the wood for the life of the product.

Timber is the only renewable building material currently available.

Benefits of wooden interiors *

- Improves air quality by moderating humidity
- Reduces stress response (pulse rate and blood pressure)
- Improves emotional state and self-expression
- Helps us reconnect with nature
- Long-term store of carbon, helping fight climate change
- Low energy used in production hence less CO² in the atmosphere
- Certification ensures timber comes from sustainable sources
- Wood is the only renewable building material

** Planet Ark - Housing, health Humanity Report 2017*

What makes Laminata homes different?



Innovation

The Laminata building system utilises the small format CLT panels as the core component that forms the floor, walls and roof. The strength of the 40mm thick CLT panel allows for the timber posts and truss structure to be spaced at 1.8m centres thus reducing framing timber used in the house by 40% compared to tradition stick framing methods.

The timber trusses and posts form a portal with the CLT panels fixed between forming infill panels and interior linings in one.



Lighting and services pelmet runs around the house perimeter

Affordability

Cost effective Our homes are quick to assemble with a battery drill with no more than a two man lift. Pre-finished 'mill direct' components, mean we can offer the house at a lower cost. We also advocate for compact living to save resources. Unlike the cheap alternatives that just met Building Code minimums we have designed for Energy efficiency significantly better than code, meaning the house is inexpensive to run.

Health and Well-being Indoor Air Quality is paramount to health, which is why we have a balanced pressure ventilation system, coupled with air tightness so the house has pre-warmed fresh air at a rate of ten whole house air changes per day. Timber interiors also reduce blood pressure and heart rates.

Sustainability The cost to the planet is of course greatly reduced building with the only renewable building material, wood. We mill locally harvested logs and add maximum value by creating innovative wooden dwellings, keeping jobs local and logs from being shipped over the wharf.



Family series

High performance, concise footprint, single level homes.

Available in Northland only, early 2018

Our flagship Laminata home series. These iconic free-standing family houses are prefabricated, 'flat pack' homes that are designed to be simply and quickly assembled on-site with little more than a battery drill. The Family Series features exposed timber trusses with robust 40mm thick engineered wood ceilings, walls and 50mm thick floors to ensure they are durable for the life of the home.



Kauwhata 2 Bedroom



65m² / 2 bedroom / 9.0m x 7.3m

This compact, easy-care home or bach has all the timber warmth and character of our larger offerings, but with more concise footprint. Covered northern deck and accessible ramp options are available for indoor / outdoor living. Maintenance-free Colorsteel vertical cladding options also available.

- 3.6 x 3.6m Master Bed
- Full-sized bathroom with shower
- Second bedroom
- Colorsteel roofing
- Abodo Vulcan vertical timber cladding
- And Colorsteel sheet cladding options



Apiata 3 Bedroom



94m² / 3 bedroom / 12.7m x 7.3m

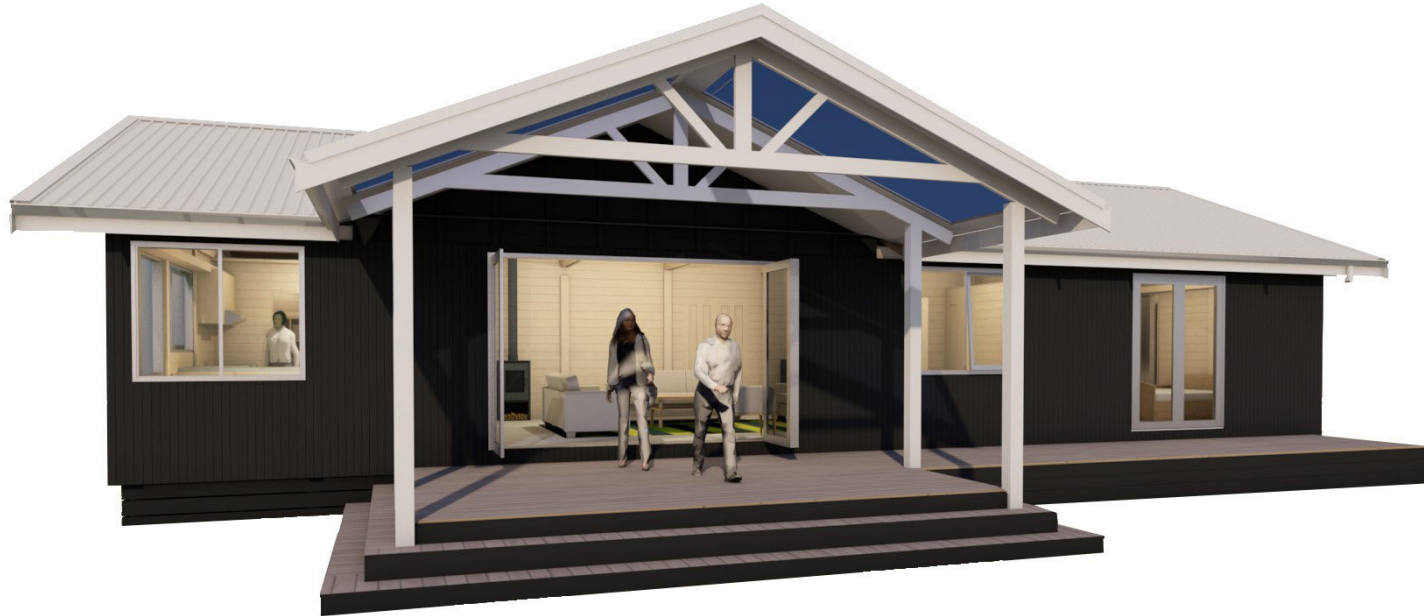
With warm timber interiors, this quality medium-sized home will keep your family healthy and well. Features include exposed timber trusses and ceilings. A nine metre long living area and covered north-facing deck make this an incredibly functional yet compact family home.

Includes a 20m² covered deck for outdoor living.

- Master Bed with wardrobe
- Full-sized bathroom with shower and bath
- Separate toilet with handbasin
- Exposed timber trusses with loft storage area
- Colorsteel roofing and clear plastic over the outdoor room
- Abodo vertical timber and colorsteel sheet cladding options



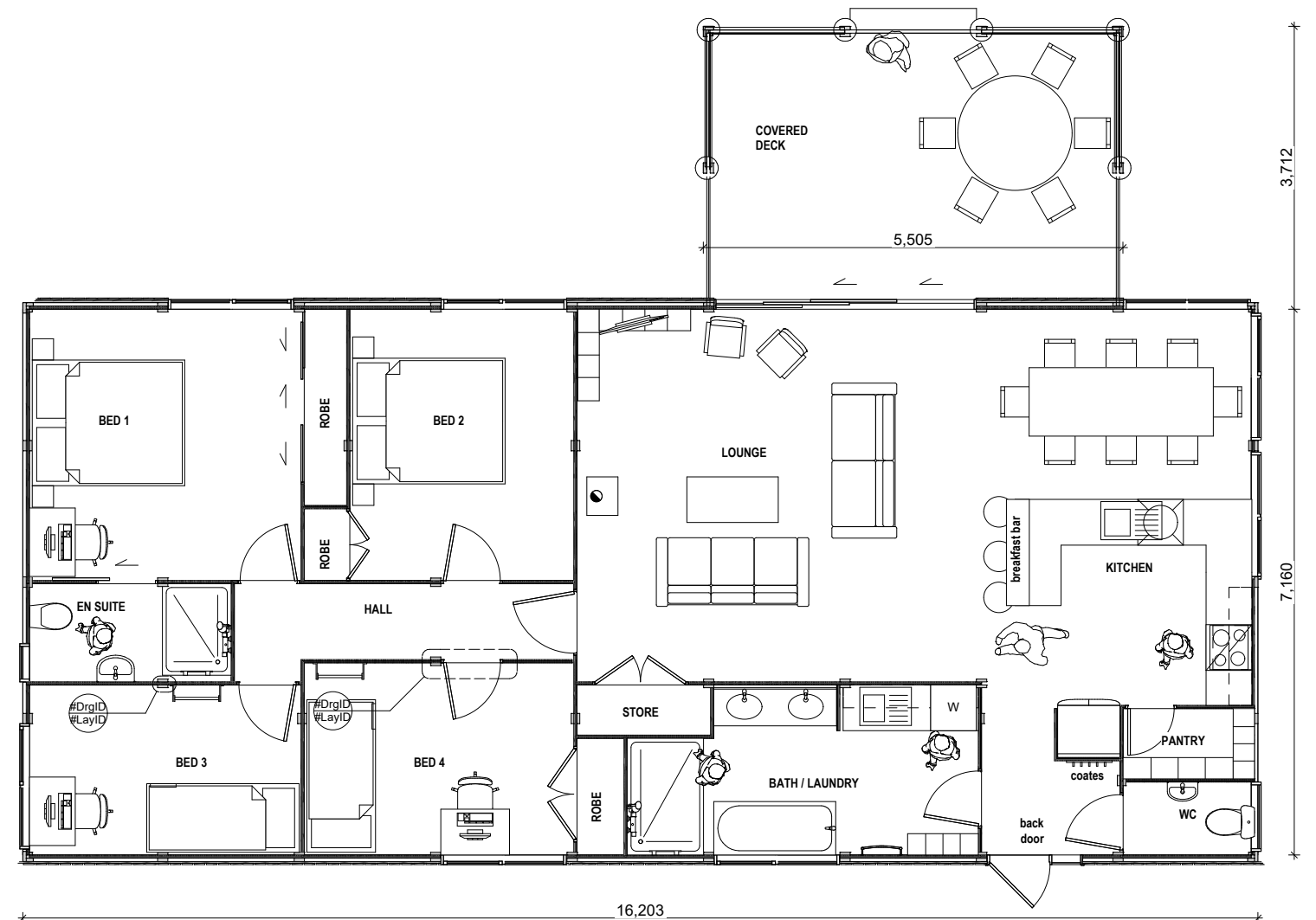
Cooper 4 Bedroom



120m² / 4 Bedroom / 16.3m x 7.4m

There's room for the family to grow into this timber-crafted four bedroom home which includes a pitched roof over the outdoor living. Keep your costs down without compromising on comforts like a master en suite, walk-in pantry and warm pine interiors.

- Master en suite plus robe
- Full-sized bathroom with shower and bath
- Separate toilet with hand basin
- Laundry bench in bathroom
- Easy-access loft storage area
- Colorsteel roofing and clear plastic over the outdoor room
- Abodo Vulcan vertical timber and colorsteel sheet cladding options



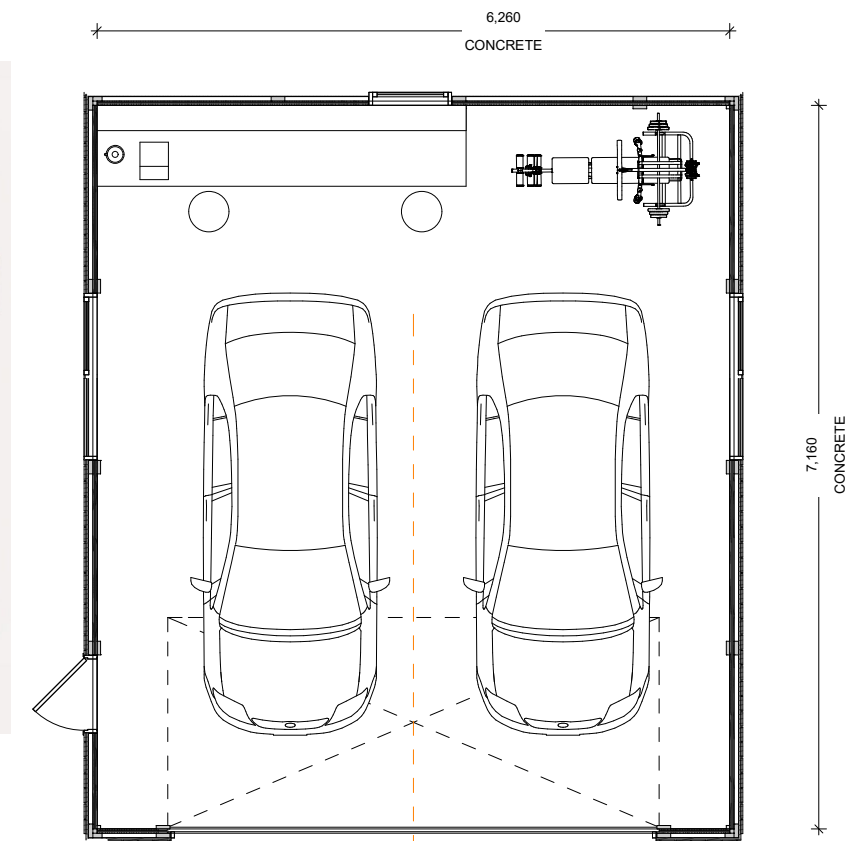
Taurua Double Garage

46m² / Double garage / 7.3m x 6.3m

Room for both cars, with storage space to spare. Our unique double garage features robust timber walls made from our CLT panelling. Fix shelving, hooks or tool racks anywhere!

Exposed timber trusses add another layer of easy storage space. Get it up and out of the way!

- Automatic sectional door
- Timber wall paneling throughout
- Aluminum windows
- Open truss for storage
- Colorsteel roofing
- Colorsteel cladding option available.



Manufacture

Mt Pokaka Timber Products Ltd.

Our Kerikeri mill has been in operation since 1991, and with aggressive investment back into the business, we have continued to grow and provide more jobs in the local community. We process in excess of 100,000 cubic metres per annum, and are continually improving recovery percentages to make the most of Northland's valuable pine resource. We are excited to develop value added products under the Laminata brand that will bring real benefits back to Northland.

Sustainability

Locally harvested, renewable resources

Our timber is sourced from sustainable plantation forests and we utilise the residues from saw-milling to provide the heat energy to dry our wood. Being a fast-growing species, Pinus Radiata is more sustainable than hardwoods.

Building with wood is one of the simplest ways to lock in carbon to protect future generations. Laminata Home construction can save around 16 tonnes of CO² compared to concrete slab and steel frame construction - (based on the 94m² 3 bedroom house). This is the same amount of CO² emitted by a car traveling 84,000km*.

**NZ Wood HOUSE Calc.*





Laminata

Look us up at laminata.co.nz for updates and availability.

Architectural Office: 10a Morningside Drive, Kingsland, Auckland 1025
(09) 634 6108 hello@laminata.nz

Our Mill: Mt. Pokaka Timber Products 1213 Bulls Rd, Kerikeri.

Postal: P.O Box 449, Kerikeri 0245, Northland

© Laminata Brands Ltd 2017. This material has been created by or on behalf of, and is owned exclusively by, Laminata Brands Ltd. It may not be copied, adapted, reproduced in any way or otherwise used for any purposes without the express prior written consent of Laminata Brands Ltd or Laminata Build Ltd